

# City of New Bedford

Transformative Transit  
Oriented Development  
(TTOD)

April 8, 2019



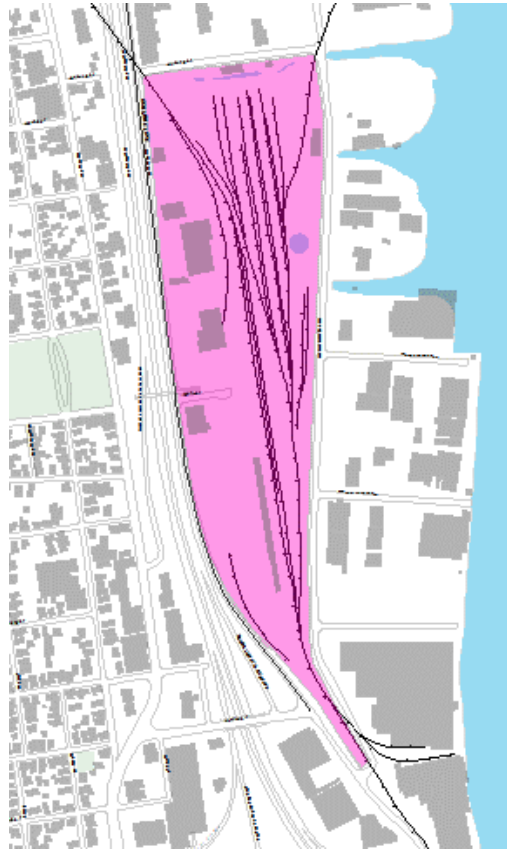


## 2 TOD Sites

- WHALE'S TOOTH
- NORTH STATION

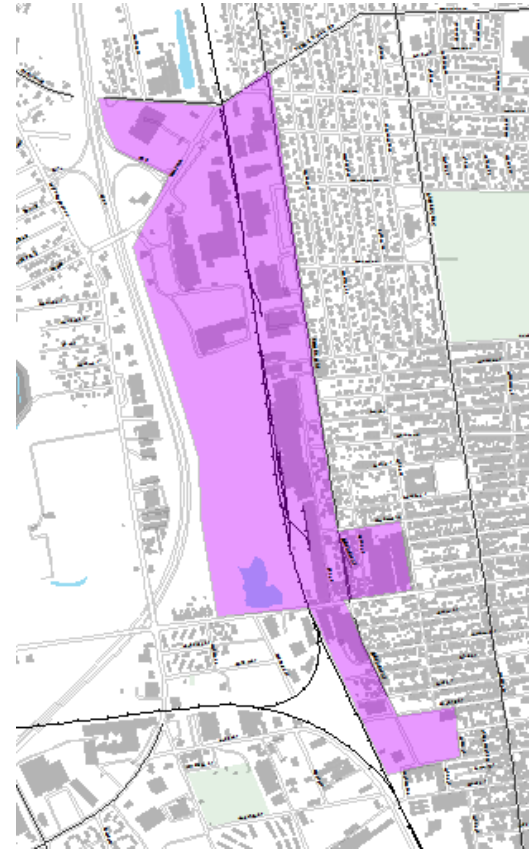
Approx. 2 Miles Apart

### Whale's Tooth TOD



- Proximity to Downtown
- Multi-modal connectivity
- Maritime/MUB/Residential

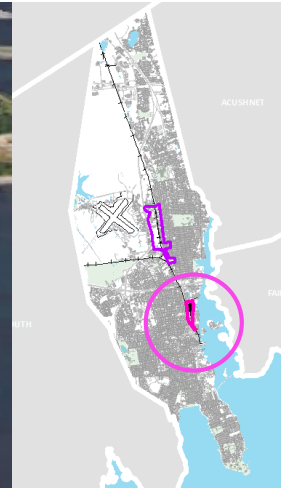
### North Station TOD



- Access to highway/retail
- Neighborhood connection
- MUB/Large-Scale Retail

# WHALE'S TOOTH

- Proximity to Downtown
- Desired Uses: Maritime/MUB/ Residential
- Multi-modal connections nearby (SRTA, bus routes, Blue Lane, etc. + Planned Pedestrian Bridge)
- Located Within Opportunity Zone Tracts
- Neighborhood connectivity





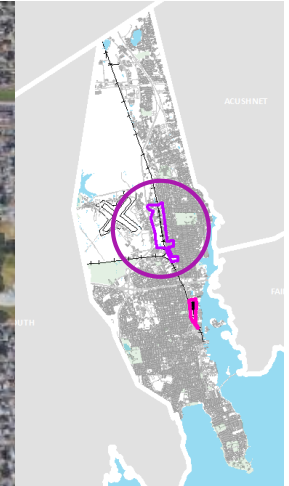
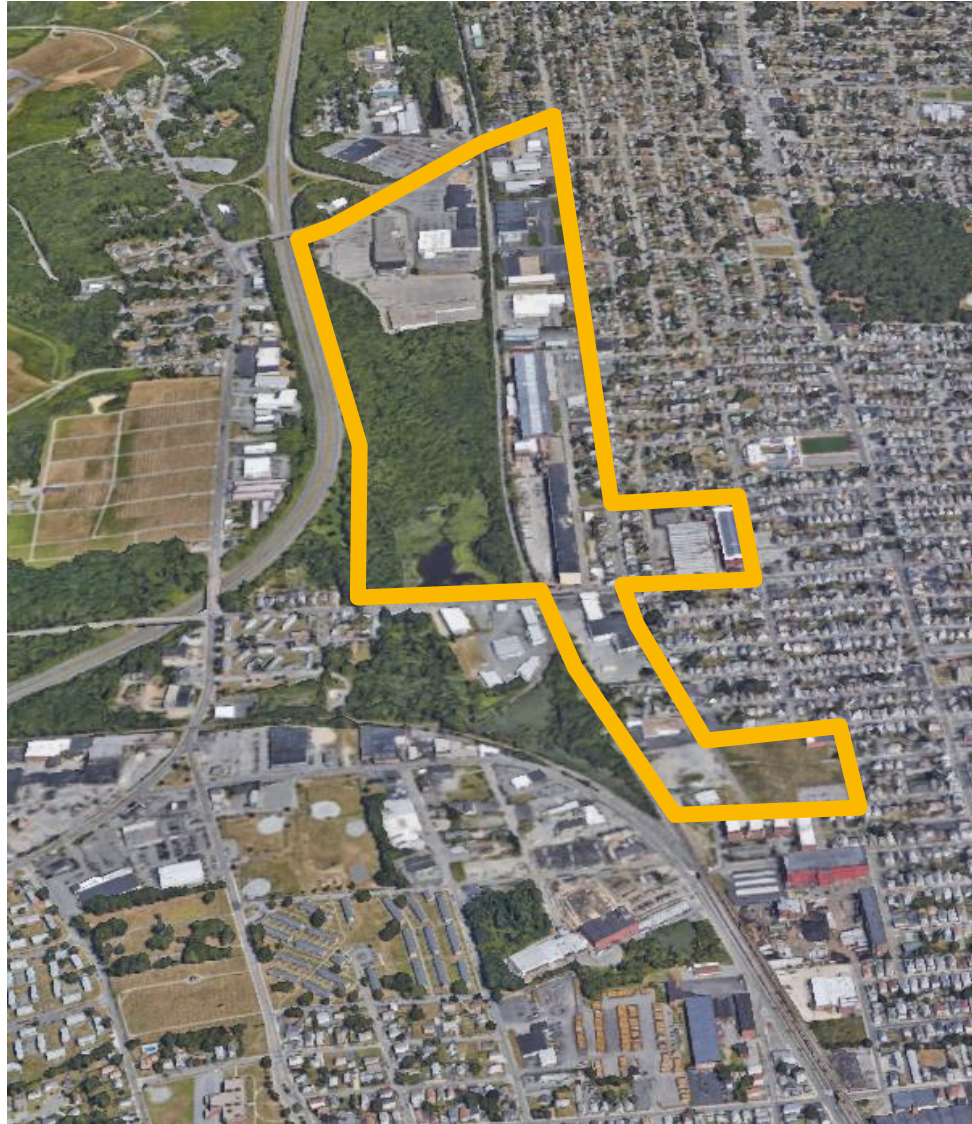
# WHALE'S TOOTH

- Proximity to Downtown
- Desired Uses: Maritime/MUB/ Residential
- Multi-modal connections nearby (SRTA, bus routes, Blue Lane, etc. + Planned Pedestrian Bridge)
- Located Within Opportunity Zone Tracts
- Neighborhood connectivity



# NORTH STATION

- Proximity to Rt. 140
- Desired Uses: MUB, Large-Scale Retail
- New Platform Location
- Planning Assessment (impacts to neighborhood, circulation, etc.)
- Community Outreach





# NORTH STATION

- Proximity to Rt. 140
- Desired Uses: MUB, Large-Scale Retail
- New Platform Location
- Planning Assessment (impacts to neighborhood, circulation, etc.)
- Community Outreach

